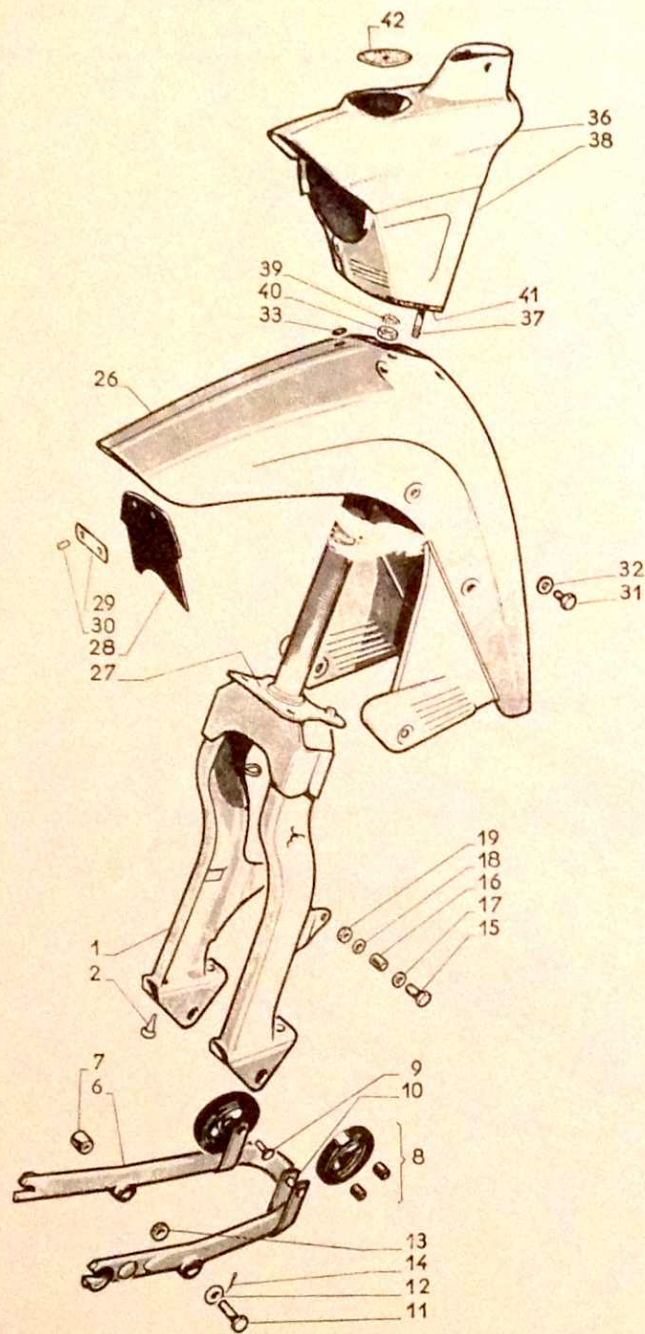


PEUGEOT MOTORBIKE PARTS

CONTINENTAL CYCLES CORPORATION

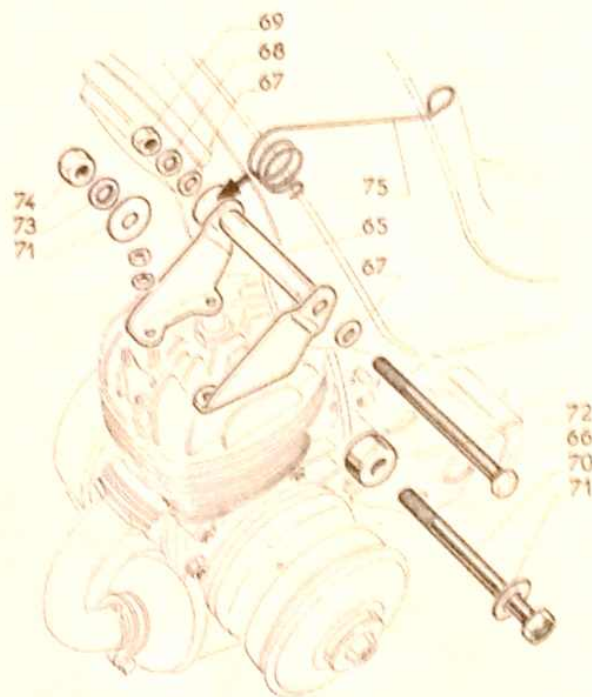
19550 Harper Avenue • Harper Woods, Michigan 48236

Phone 313 884-7500 (Detroit)

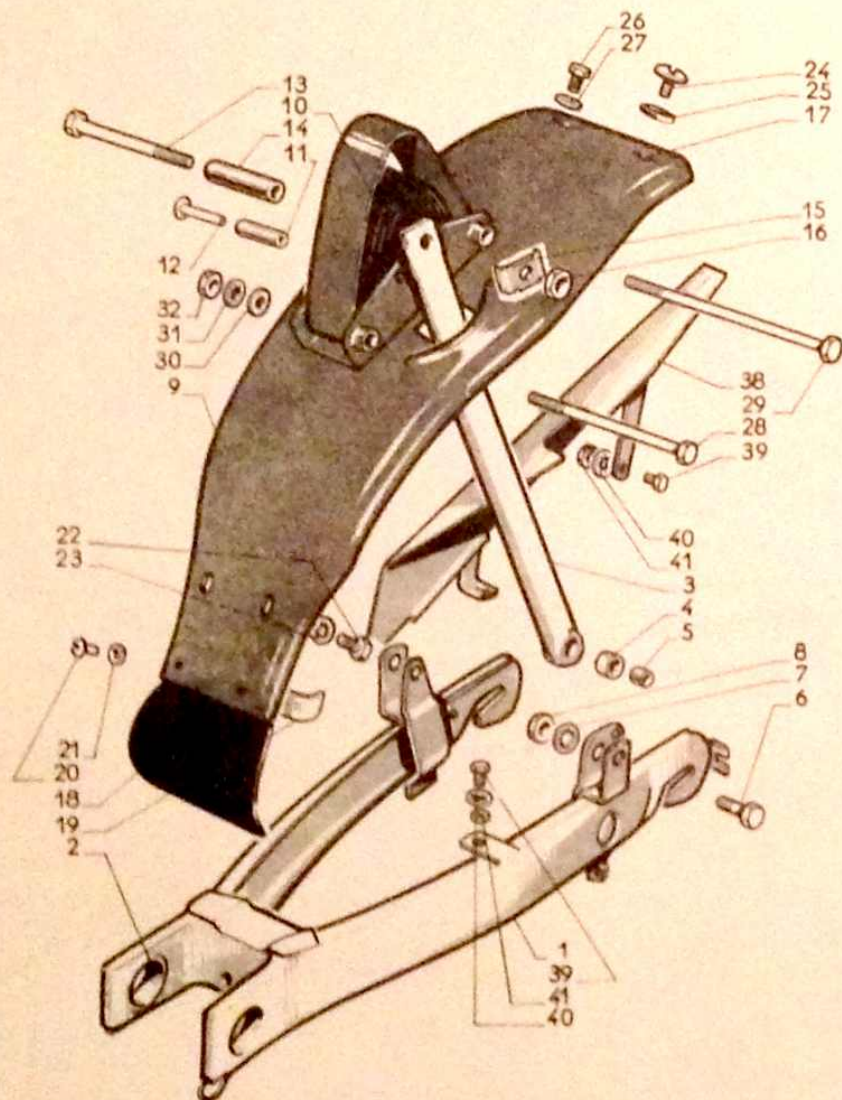


Drawing No	Part No	Nbr of	DESCRIPTION
FRONT FORK			
1	39813	1	Front fork with rubber buffers
2	41083	4	Rubber buffers
FRONT SUSPENSION			
6	40077	1	Swinging arm with silent bushings and rubber rings
7	36512	2	Bushing
8	41670	2	Neiman rubber suspension unit (3 concentric rings and 2 rubber spacers)
9	39782	2	Fixing rivet
10	41671	2	Spacer 7.2 mm x 12 mm length 15 mm :
11	39957	2	Swinging arm pivot
12	M 7	4	Plain washer
13	H bis K 8	2	Nut
14	V 2-25	2	Split pin
15	39956	2	Upper mounting bolt
16	38038	2	Spacer (dia. 7,2 x 10 L = 14)
17	M 6	2	Plain washer
18	B 7	2	Spring washer
19	HM 7	2	Nut
	39917	0 172	Plastic edging
FRONT MUDGUARD			
26	39779	1	Front mudguard
27	39781	1	Plate
28	40232	1	Front mudflap
29	40234	1	Clamp
30	40235	2	Fixing screw
31	39955	2	Mudguard fixing bolt
32	V 643 C	2	Plain washer
33	29135	1	Washer
HEADLAMP HOUSING			
36	40354	1	Upper part of housing
37	40356	2	Fixing studs
38	40355	1	Lower part of housing
39	37370	4	Spring washer
40	HU 5	4	Nut
41	40140	0 196	Plastic edging
42	37916 A	1	Speedometer hole cover

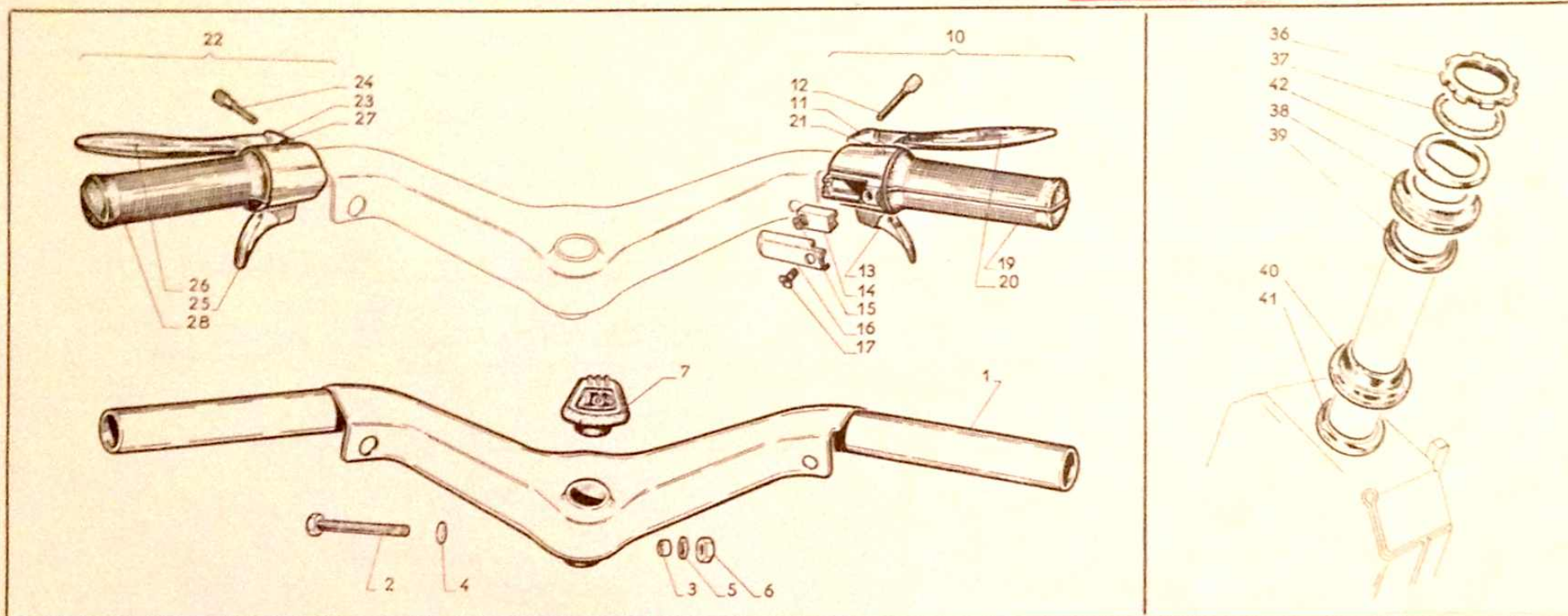
Drawing No	Part No	Nbr of	DESCRIPTION
FRAMEWORK			
1	39739	1	Frame with insignias & fuel tank cap
2	40177	2	Lion insignia
3	40387	1	Fuel tank cap
4	40389	1	Fuel tank cap sealer
5	31884 E	6	Captive nut for retaining foot-boards and rear mudguard
6	39965	1	Frame Molding
8	40181	2	Rear mudguard Molding
9	40178	1	Air admission grate
10	39176	1	Rear name plate "104"
11	34471	2	Screw
12	39531	1	Luggage carrier molding
13	37666	1	Rubber grommet
14	H 7-40	2	Clamping bolt
15	B 7	2	Washer
16	39928	1	Tapped plate
FOOTRESTS			
25	39717	1	RH footboard with rubber mat and molding
26	39725	1	Rubber mat
27	40182	1	RH molding
28	39718	1	LH footboard with rubber mat and molding
29	39726	1	Rubber mat
30	40183	1	LH molding
31	39711	4	Bearing plate
32	35447	4	Clip
33	P 6-10 CR	6	Chrome plated fixing screw
34	36461	6	Washer
	40675	2	Folding foot rests
STAND			
40	39777	1	Stand
41	38736	1	Stand Pivot bolt
42	37513	1	Spring
43	V 1-5-20	1	Split pin
LEG SHIELDS			
50	39681	1	RH legshield with molding
51	39682	1	LH legshield with molding
52	H 7-15	2	Fixing bolt
53	B 7	2	Washer
54	L 6	2	Plain washer
55	41071	1	RH molding
56	41072	1	LH molding
57	C 5-160 B	1	Mounting bolt
58	HU 5	1	Nut



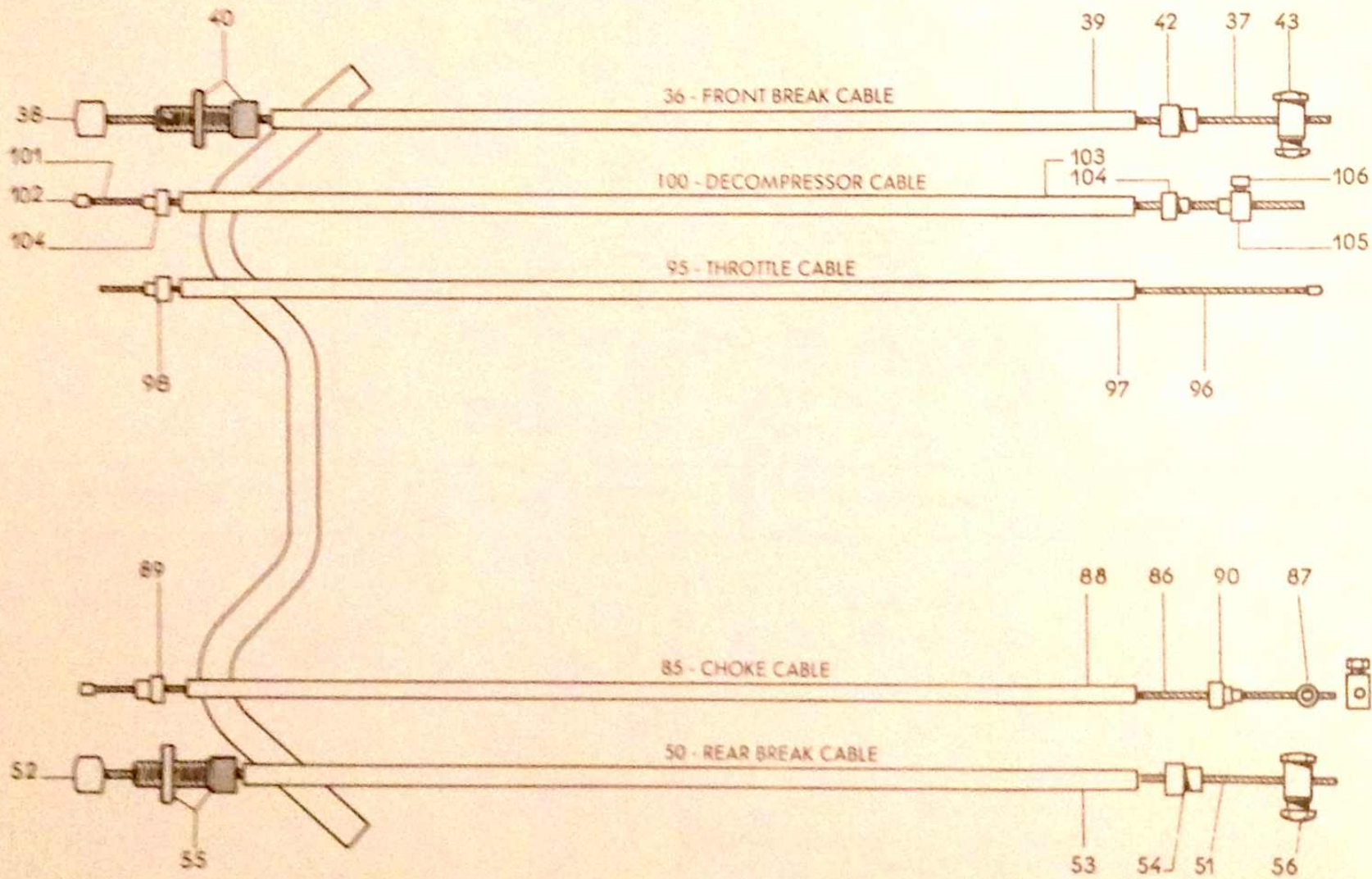
Drawing No	Part No	Nbr of	DESCRIPTION
PULLEY GUARD			
60	40687	1	Pulley guard
ENGINE MOUNTING			
65	40324	1	Mounting bracket
66	39960	1	Upper fixing bolt
67	M 7	2	Washer
68	B 8	1	Spring washer
69	39964	1	Nut
70	H 10-65	1	Rear mounting bolt
71	L 10	2	Plain washer
72	39699	1	Spacer
73	37312	1	Spring Washer
74	HU 10	1	Nut
75	41309	1	Plug wire support



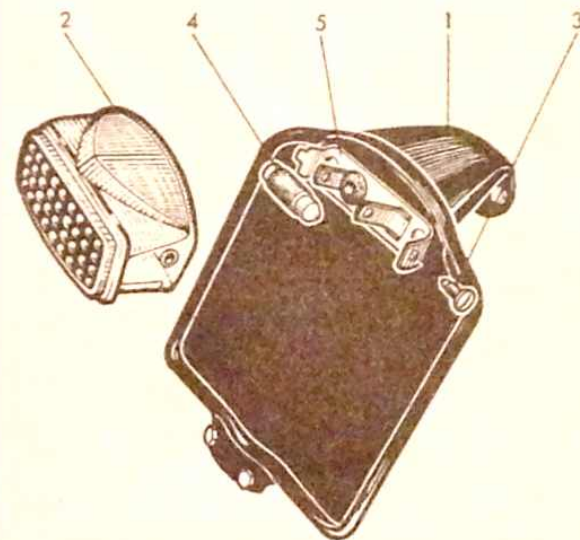
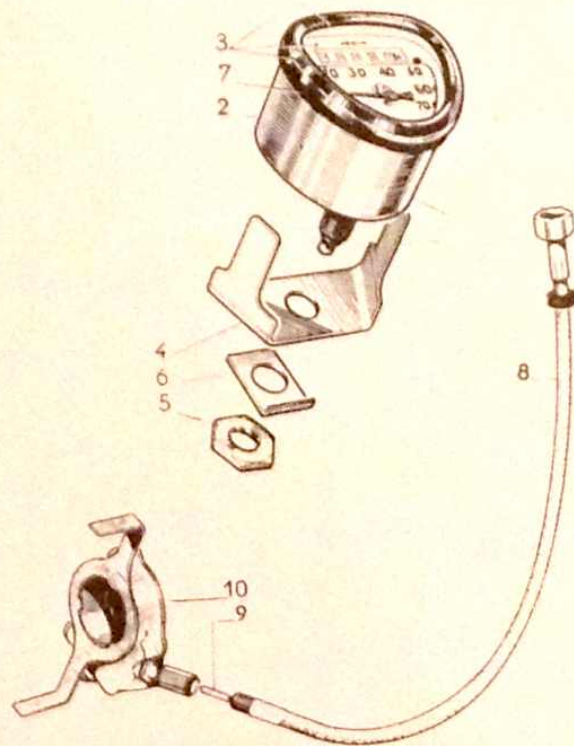
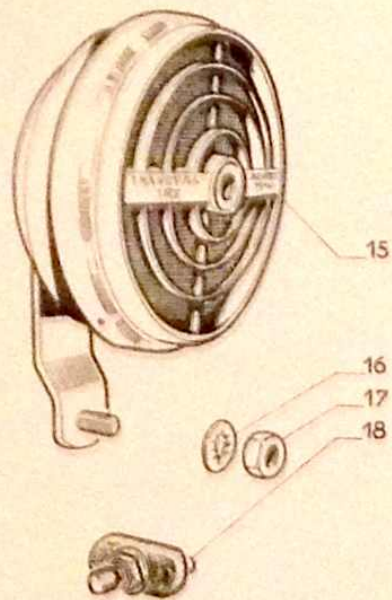
Drawing No	Part No	Nbr of	DESCRIPTION
REAR SUSPENSION			
1	39921	1	Swinging arm
2	37826 B	2	Pivot bushing
3	39923	2	Rear suspension support
4	39925	2	Rubber bushing
5	39926	2	Spacer
6	H 8-25	2	Lower fixing bolt
7	B 8	2	Spring washer
8	HM 8	2	Nut
9	39751	1	Rear mudguard assembly with NEIMAN rubber ring
10	39124	1	NEIMAN rubber ring
11	39125	2	Rubber ring spacer
12	39759	2	Rubber ring fixing rivet
13	H 7-55	1	Upper fixing bolt for support
14	39071	1	Spacer
15	39768	1	Tab washer
16	HM 7	1	Nut
17	31884 E	2	Captive nut
18	39749	1	Mudflap
19	39750	1	Clamp
20	VR 4-8	2	Screw
21	HU 4	2	Nut
22	H 6-12	2	Lower mudguard mounting bolt
23	3773	2	Spring washer
24	P 6-15	2	Upper mudguard fixing bolt for single seat
25	36461	2	Washer for single seat
26	H 6-16	2	Mudguard upper fixing bolt for dual seat
27	37773	2	Washer for dual seat
28	39958	1	Bolt L = 112 fastening rubber rings
29	39959	1	Bolt L = 130 fastening rubber rings
30	M 6	2	Plain washer
31	B 7	2	Spring washer
32	39963	8	Nut
CHAIN GUARD			
38	40336	1	Chain guard
39	H 6-12	2	Fixing screw
40	37773	2	Spring Washer
41	HU 6	2	Nut



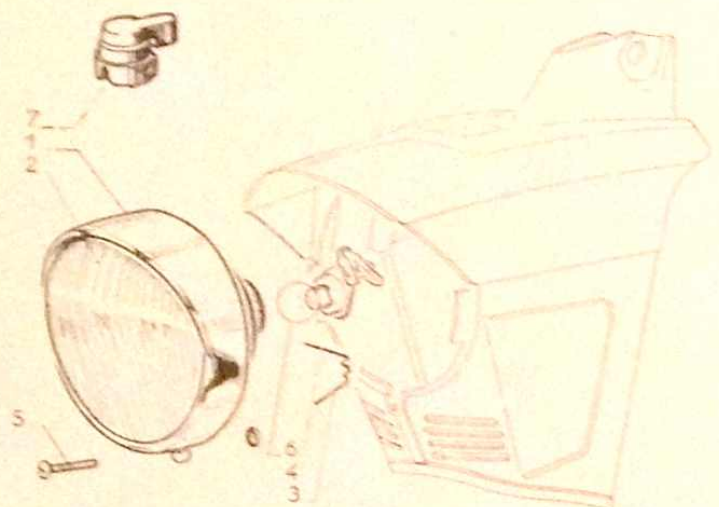
Drawing No	Part No	Nbr of	DESCRIPTION	Drawing No	Part No	Nbr of	DESCRIPTION
HANDLEBAR							
1	40390	1	Handlebar without grips and hole cover motif	19	59 B CB	1	Twistgrip rubber (dia. 25 L = 105)
2	40108	1	Clamp bolt	20	273 CB	1	RH brake control lever
3	40553	1	Spacer	21	74 A CB	1	Brake lever pivot
4	M 7	1	Plain washer	22	40091	1	LH grip with brake lever and choke
5	B 7	1	Spring washer	23	274 CB	1	LH brake lever body
6	39964	1	Nut	24	181 CB	1	Body attachment screw (dia. 7)
7	39117	1	Hole cover motif	25	275 CB	1	Choke lever
HANDLEBAR CONTROLS				26	273 G CB	1	LH brake lever
10	38978	1	CLB RH twist grip assembly with decompressor trigger and brake lever	27	74 A CB	1	Brake lever pivot
11	272 CB	1	RH brake twist grip body without trigger	28	600 B CB	1	LH fixed rubber grip
12	181 CB	1	Body attachment screw (dia. 7)	STEERING HEAD			
13	265 CB	1	Decompressor trigger	36	40743	2	Adjustment nut
14	233 CB	1	Throttle control slide with screw	37	41182	1	Spring washer
15	66 CB	1	Throttle control cable clamping screw	38	30420	1	Adjustable cup
16	232 B CB	1	Twistgrip body cover	39	V 187	1	Bearing race
17	51 CB	1	Cover screw	40	40850	1	Lower cup
	238 CB	1	Twistgrip tube	41	V 192	1	Bearing race
					691 A	50	Ball 3.97 mm
				42	41181	1	Locking plate



Drawing No	Part No	Nbr of	DESCRIPTION	Drawing No	Part No	Nbr of	DESCRIPTION
FRONT BRAKE CONTROL				THROTTLE CONTROL			
36	43679	1	Front brake cable assy.	95	V 17438 E	1	Throttle cable assy.
37	V 17185 B	1	Inner cable with nipple (dia. 1.5 mm)	96	V 17141	1	Inner cable (dia. 1.2 x 1060 mm) with nipple
38	V 17162	1	Nipple	97	1085 B	0m900	Outer casing (dia. 3 x 5 mm)
39	1085 B	0m990	Outer casing (dia. 3 x 5 mm)	98	V 242	1	Ferrule, twist grip end
40	42778	1	Brake adjustment screw (dia. 6 mm) with locknut				
42	43678	1	Ferrule, lever end				
43	38583	1	Solderless nipple				
REAR BRAKE CONTROL				DECOMPRESSOR CONTROL			
50	43680	1	Rear brake cable assy.	100	V 17200	1	Decompressor cable assy.
51	V 17185 B	1	Inner cable (dia. 1.5 mm) with nipple	101	V 17200 B	1	Inner cable (dia. 1.5 mm) with nipple
52	V 17162	1	Nipple	102	37727 B	1	Nipple
53	1085 B	1390	Outer casing (dia. 3 x 5 mm)	103	1085 B	0m87	Outer casing (dia. 3 x 5 mm)
54	43678	1	Ferrule, lever end	104	V 242	2	Ferrule
55	42778	1	Brake adjustment screw (dia. 6 mm) with locknut	105	V 2048 B	1	Solderless nipple
56	38583	1	Solderless nipple	106	H 4-8	1	Screw for solderless nipple
CHOKE CONTROL							
85	38704 B	1	Choke cable assy.				
86	40649 B	1	Inner cable (1.2 mm) with nipple				
87	40802	1	Solderless nipple				
88	1085 B	0m930	Outer casing (dia. 3 x 5 mm)				
89	V 242	1	Ferrule				
90	V 17282	1	Ferrule				

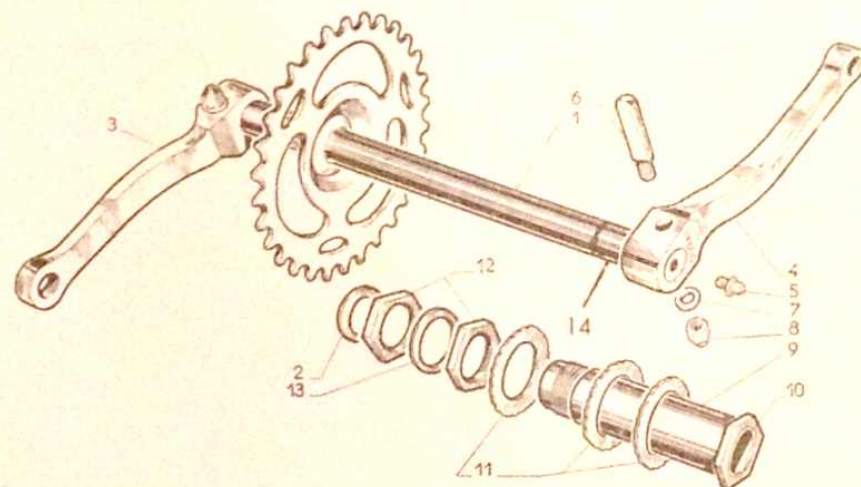
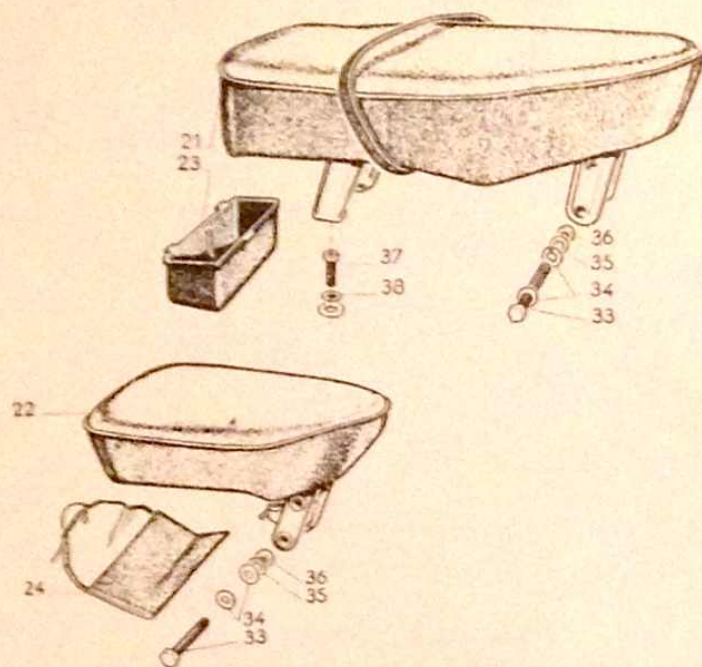


Drawing No	Part No	Nbr of	DESCRIPTION	Drawing No	Part No	Nbr of	DESCRIPTION
ELECTRIC HORN							
15	40184	1	Electric horn	7	769 A	1	Rubber support seal
16	B 6	1	Lock washer	8	39784	1	Speedometer cable
17	HU 6	1	Nut	9	39784 B	1	Speedometer cable inner
18	40034	1	Button assembly for handlebar	10	40955	1	Speedometer gear box nut dia. 6 mm
SPEEDOMETER							
2	40954	1	Triangular ED speedometer with cable and gearbox	8	41265	1	Speedometer cable length 880 mm Nut dia. 7 mm
3	39135	1	Triangular speedometer	10	41264	1	Speedometer gear box Nut dia. 7 mm
4	764 A	1	Speedometer glass and seal assembly	LICENSE PLATE ASSEMBLY			
5	766 A	1	Mounting Clamp	1	45015	1	License plate with bulb holder and attachment parts
6	767 A	1	Clamp tightening nut	2	843	1	Red lens
	768 A	1	Tab washer	3	806	1	Fixing screw
				4	44611	2	Bulb 12V - 7 W
				5	45015 B	1	Bulb holder
					45009	1	Stop light switch



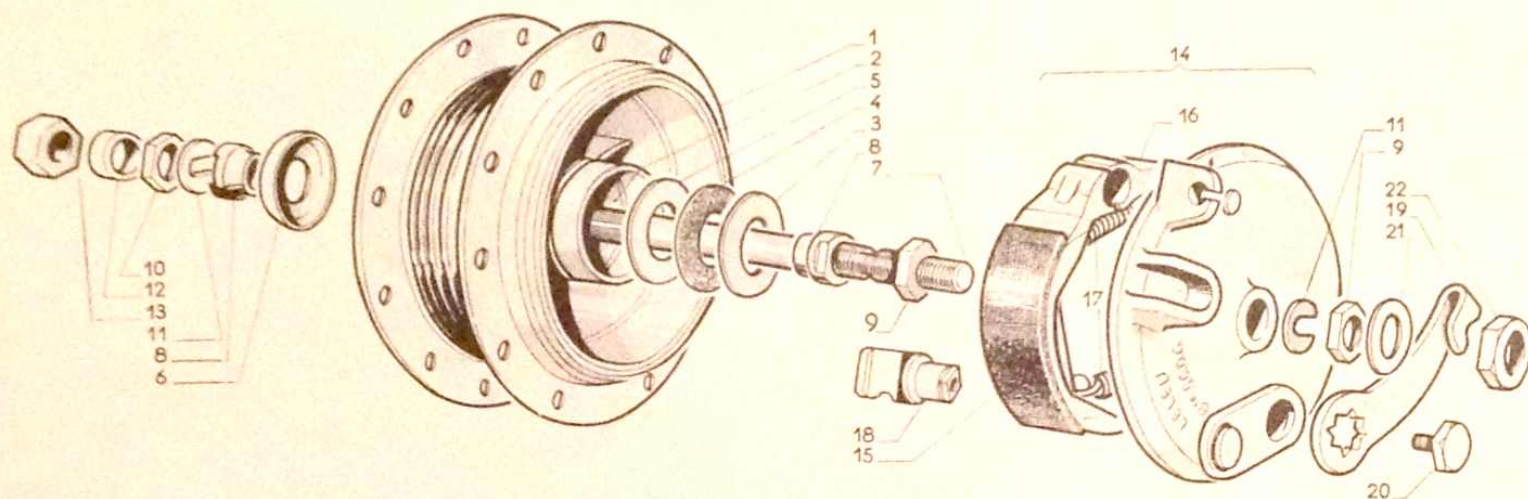
Drawing No	Part No	Nbr of	DESCRIPTION
HEADLIGHT			
1	40031	1	CIBIE adjustable headlight
2	1-20-02	1	Glass
3	0-00-62	2	Attachment springs
4	3047	1	Bulb holder
5	0-00-63	1	Fixing screw
6	7030	1	Bulb 6V-15/15 W
ELECTRIC FITTING			
	40568	1	Wiring harness (wire and sleeve)
	182 A	1	Single electrical lead
7	41825	1	Switch assembly

Drawing No	Part No	Nbr of	DESCRIPTION
CHAIN DRIVE			
	385 A	1	Peddalling chain 88 links + 1 pitch 12,7 mm, rollers 7,75 mm
	V 175	1	Spring clip for 3,30 wide chain
	19044	1	Driving chain, width 4,88 pitch 12,7 mm rollers 7,75 - 93 links + 1 spring clip
	18519-1	1	Spring clip for 4,88 wide chain
FREE WHEEL			
	586 A	1	Free wheel - 16 teeth
CHAIN TENSIONER			
	124 A	1	Chain tensioner
PEDALS			
	453 A	1	Pair of pedals with rubber pads
	V 1082	1	RH pedal axle, L = 125 mm with cone, washer, locknut
	V 1083	1	LH pedal axle, L = 125 mm with cone, washer, locknut
	691 A	40	Ball 3,97 mm
	V 1070	2	Pedal cone
	V 1071	2	Washer
	V 1072	2	Cone nut
	V 1073	2	Pedal Cap - Screw On
	V 1079 D	4	Rubber pads 98 mm
TIRES AND TUBES			
		2	15 x 2.25 Tires
		2	15 x 2.25 Tubes
ANTI THEFT LOCK			
	1170	1	NEIMANN anti theft lock with two keys
TOOLS			
	40596	1	Spark plug spanner
	41116	1	Set of 3 tire levers combined with 8 and 10 mm wrenches
	532 A	1	Tire repair set
	637 A	1	Plastic saddle bag

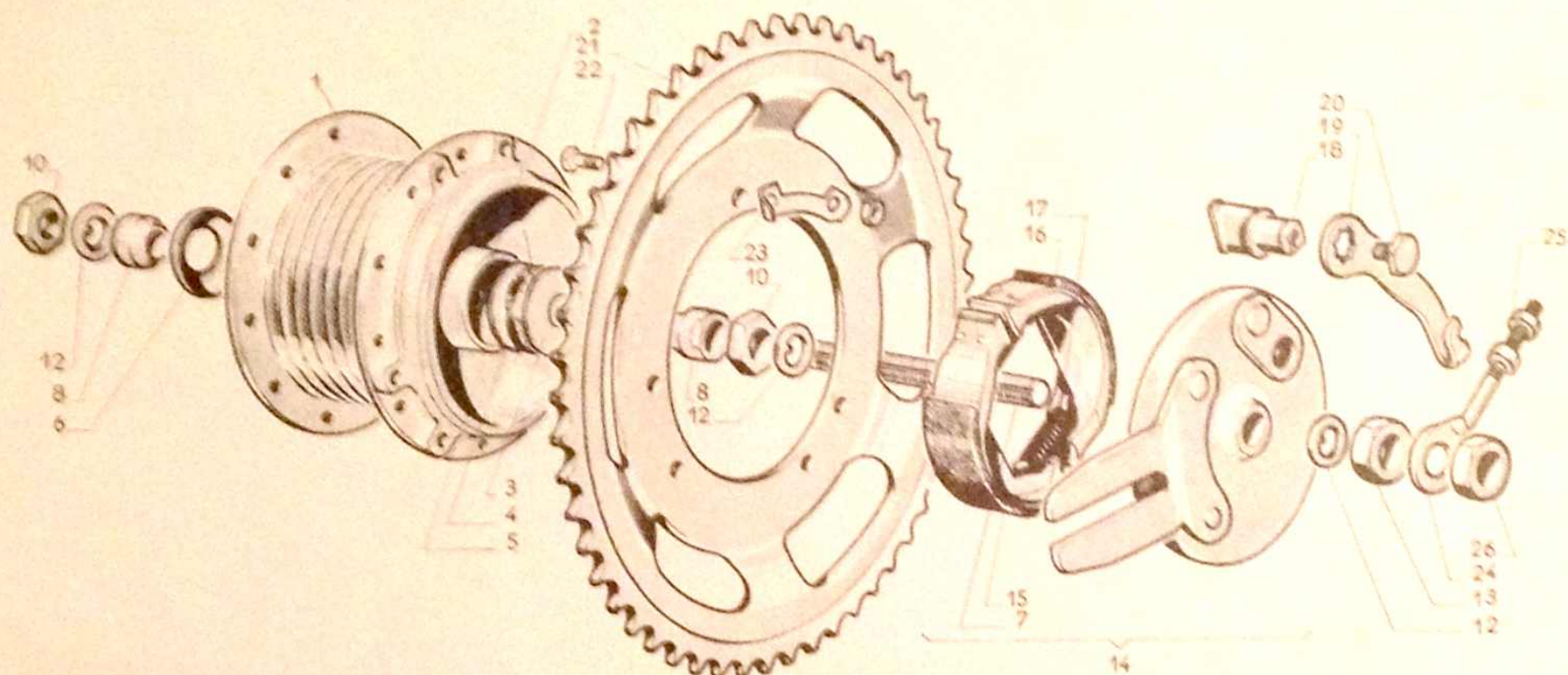
MODEL 104M "M"**PEUGEOT MOTORBIKE PARTS**

Drawing No	Part No	Nbr of	DESCRIPTION
SADDLE			
21	40634 SE	1	Dual seat with stem and brackets - Sable
	40634 B	1	Seat strap
22	40107	1	Single seat saddle complete with tool kit
24	40107 T	1	Tool roll
SADDLE ATTACHMENT PARTS			
33	39961	2	Front mounting bolt
34	M 6	4	Plain washer
35	B 7	2	Spring washer
36	39963	2	Nut
37	H 6-16	2	Rear mounting bolt
38	37773	2	Spring washer

Drawing No	Part No	Nbr of	DESCRIPTION
PEDAL SPROCKET ASSY.			
1	39080	1	Crank axle with chain wheel
2	V 17068	1	Thrust washer
3	39821	1	RH pedal arm
4	39270	1	LH pedal arm
5	18857	1	Grease fitting at end of crank axle
6	V 947	2	Locking pin with washer and nut
7	V 643 C	2	Washer
8	HR 6	2	Acorn nut
9	39927	1	Axle tube
10	V 16951	2	Hex flange
11	V 16909	3	Washer
12	40442	2	Adjusting nut
13	V 16910	1	Washer
	41180	1	Pedal lock spring
	41221	1	Pedal lock
14	39832	1	Spacer



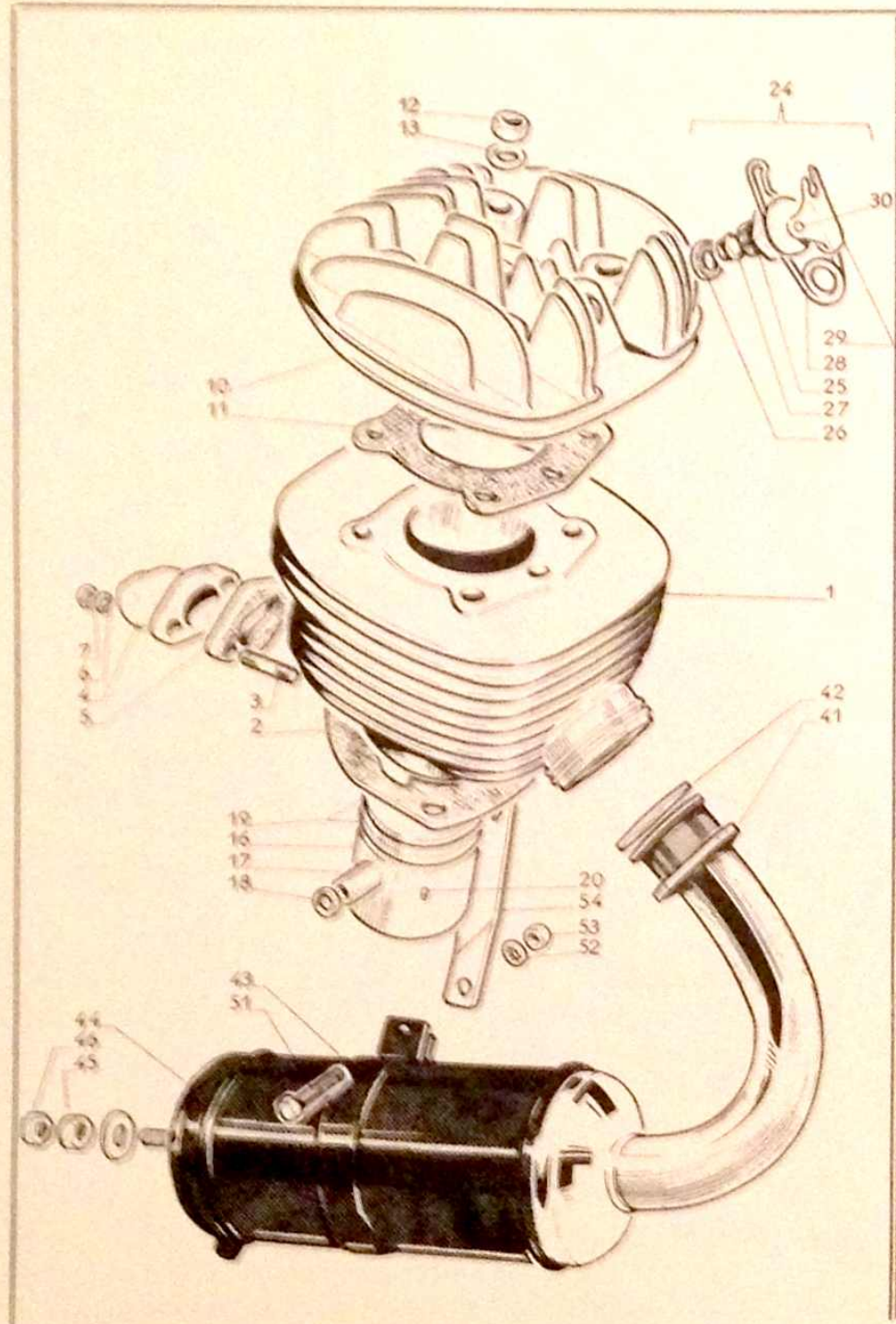
Drawing No	Part No	Nbr of	DESCRIPTION	Drawing No	Part No	Nbr of	DESCRIPTION
			FRONT WHEEL				
	40763	1	Front wheel without tire, with LELEU hub	8	1543-5	2	Bearing race
	39894	1	Chromium plated rim (15 x 2.25)		693 A	18	Balls (6,35 mm)
	40941	24	Spoke	9	V 1317 B	2	Nut
	37144	24	Spoke nipple	10	154321	1	Nut
	39895	1	Rim lining	11	V 1323	2	Tongue washer
			LELEU FRONT HUB	11 A	1543-28	2	Open washer
	40939	1	LELEU front hub with brake drum	12	154322	1	Spacer
1	1607-1 P 24	1	Hub body with bearing races	13	154310	1	Nut
2	V 1428	2	Front hub bearing race	14	1607-10	1	Brake plate assembly with shoes and lever
3	1680-2	1	Dust cover washer	15	1607-14 D	1	RH brake shoe with bonded lining
4	1542-31 F	1	Dust cover felt	16	1607-14 G	1	LH brake shoe with bonded lining
5	1542-28	1	Thrust washer	17	V 8703 S	2	Brake shoe spring
6	1542-6	1	Dust cover	18	1607-13	1	Brake cam
7	15437 L	1	Front wheel axle (dia. 9, 5 x 141 mm)-	19	1543-17 B	1	Cam lever
				20	V 1421	1	Lever fixing bolt
				21	V 11062	2	Washer
				22	V 16801	2	Wheel nut



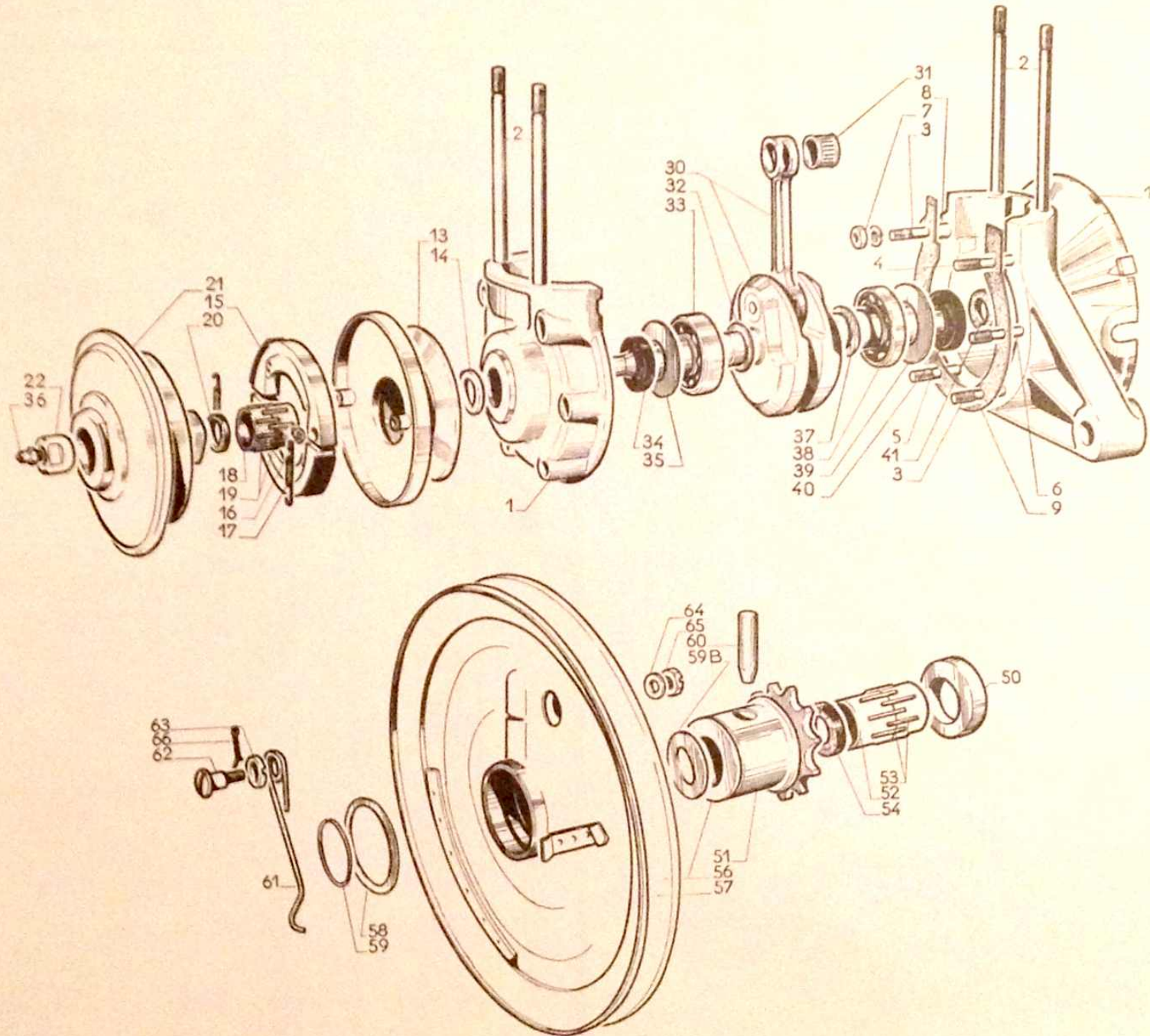
Drawing No	Part No	Nbr of	DESCRIPTION	Drawing No	Part No	Nbr of	DESCRIPTION
			REAR WHEEL	8	1542-5	2	Bearing race
	40761	1	Rear wheel without tire, with LELEU drum brake type hub	10	694 A	22	Bolts (5.5 mm)
	39894	1	Chromium plated rim (dia. 15 x 2.25)	—	V 1442	2	Nut
	40941	24	Spoke	—	1542-30	(Var)	Plain washer
	37144	24	Spoke Nipple	12	1542-8	2	Tongue washer
	39895	1	Rim lining	13	1542-14	1	Nut
			LELEU REAR HUB	14	1606-7	1	Brake plate assembly with shoes and lever
	40940 B	1	One piece LELEU rear hub - 48 teeth sprocket	15	1607-14 D	1	RH brake shoe with bonded lining
	1606-1 A 24	1	Rear hub with bearing races	16	1607-14 G	1	LH brake shoe with bonded lining
	Y 1428	2	Rear hub bearing race	17	V 8703-S	2	Brake shoe spring
	1680-2	1	Dust cover washer	18	1606-12	1	Brake cam
	1542-31 F	1	Felt cover washer	19	1680-17	1	Cam lever
	1542-28	1	Washer	20	V 1421	1	Lever fixing bolt
	1542-6	1	Dust cover	21	40951	1	Sprocket (48 teeth)
	1542-7	1	Rear wheel axle (dia. 11 x 181)	22	620 L	6	Bolt with washer and fixing nut
				23	39469	3	Bracket washer
				24	29387	2	Chaintensioner
				25	HU 6	4	Nut
				26	120 AMD	2	Rear wheel nut

PEUGEOT MOTORBIKE PARTS

MODEL 104M "M"



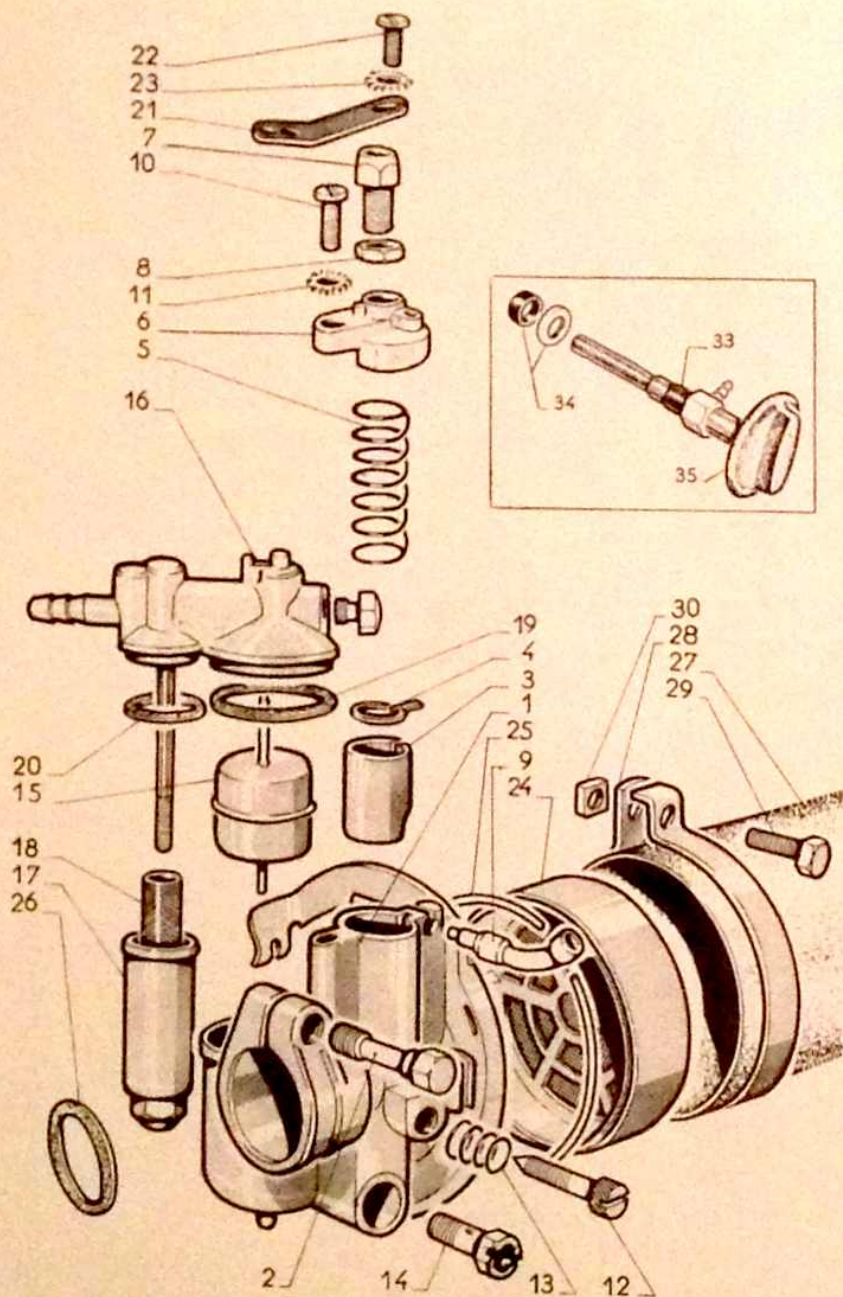
Drawing No	Part No	Nbr of	DESCRIPTION
CYLINDER			
1	40254 E	1	Cylinder with studs
2	35749	1	Cylinder base gasket
3	G 5-18-10	2	Stud for carburetor intake
4	39801	1	Carburetor intake
5	41884	1	Carburetor gasket
6	W 5	2	Spring washer
7	HU 5	2	Nut
CYLINDER HEAD			
10	36991	1	Cylinder head
11	36123	1	Cylinder head gasket
12	HU 7	4	Cylinder head nut
13	W 7	4	Spring washer
PISTON			
16	36120 E	1	Piston with pin and rings
17	27194	1	Pin
18	22309	2	Retainer clips
19	38315	2	Piston ring
20	V 190	2	Ring location peg
DECOMPRESSOR VALVE			
24	32136	1	Decompressor valve assembly
25	31474	1	Decompressor valve body
26	31152	1	Body washer
27	32133	1	Valve
—	40594	1	Valve seal ring
28	32134	1	Decompressor valve spring
29	32132	1	Clip
30	32135	1	Clip axis pin
EXHAUST SYSTEM			
41	40500 E	1	Exhaust pipe & muffler
42	39450	1	Exhaust pipe nut
43	39240	1	Exhaust pipe washer
44	40510	1	Collar
45	40502	1	Muffler rear section
46	HU 6	1	Nut
47	38644	1	Nut
48	40856	1	Attachment clip
49	H 6-35	1	Bolt
50	MU 6	1	Washer
51	HU 6	1	Nut
52	H 6-20	1	Mounting bolt
53	37773	1	Washer
54	HU 6	1	Nut
55	40512	1	Muffler bracket
56			} For muffler with detachable tail pipe
57			



PEUGEOT MOTORBIKE PARTS

MODEL 104M "M"

Drawing No	Part No	Nbr of	DESCRIPTION	Drawing No	Part No	Nbr of	DESCRIPTION
CRANKCASE				32	37741	1	Spacing washer, drive side
1	40025 37007 E	1	LH and RH crankcase assembly with studs	33	14403	1	Bearing 20 x 47 x 14 drive side
2	35753	4	Cylinder head to cylinder attachment stud	34	37004	1	Seal ring 20 x 30 x 4.5 drive side
3	35761	2	Crankcase stud 6 x 42 x 12	35	37034	1	Bearing backing washer
4	G 6-37-12	1	Crankcase stud	36	18857	1	Grease fitting crankshaft end
5	36608	2	Crankcase stud 6 x 32 x 12	37	37740	1	Spacing washer, flywheel side
6	36609	1	Crankcase stud 6 x 29 x 12	38	14292	1	Bearing 17 x 40 x 12 flywheel side
7	HU 6	6	Crankcase nut	39	37742	1	Bearing backing washer
8	35752	2	Crankcase locating dowel	40	37616	1	Seal ring 16 x 30 x 4.5 flywheel side
9	35751	1	Crankcase gasket	41	37615	1	Seal felt, flywheel side
CLUTCH MECHANISM				COUNTER SHAFT			
13	38107	1	Drive pulley	50	38610	1	Sprocket thrust washer, dia. 16,5 x 28 x 2 mm
14	34556	1	Drive pulley thrust washer	51	37763	1	Final drive sprocket 12 teeth
15	36149 E	2	Clutch shoe with linings and springs	52	37711	2	Half needle bearing cage (nylon)
16	37966	2	Clutch shoe retaining clip	53	37844	12	Needle, dia. 2 x 15,8 mm
17	36148	2	Clutch shoe return spring	54	36107	1	Seal felt
18	37863	2	Half needle bearing cage (nylon)	56	38589	1	Driven pulley assembly with final drive sprocket C/N driving pin
19	37964	10	Needle (dia. 2 x 15,8 mm)	57	37758	1	Driven pulley
20	38601	1	Seal ring (15 x 19 x 2 mm)	58	38406	1	Pulley backing washer dia. 38 x 44 x 6
21	38119	1	Clutch assembly (powder clutch type mechanism)	59	37838	1	Pulley retaining ring
22	39324	1	Clutch to crankshaft attachment nut.	59 B	36104	1	Pulley backing washer (sprocket side)
CRANK SHAFT ASSEMBLY - BEARINGS - SEALS				60	37765	1	Driving pin
30	39858	1	Connecting rod assembly with needle bearing cage 35104	61	37764	1	Locking spring
31	35104	1	Needle bearing cage dia. 12 x 15 x L = 13,5	62	37766	1	Spring attachment screw
				63	37834	1	Spring cup
				64	L 7	1	Plain washer
				65	HBK 7	1	Nut
				66	V 2 25	1	Cotter Pin
					39986	1	V-belt

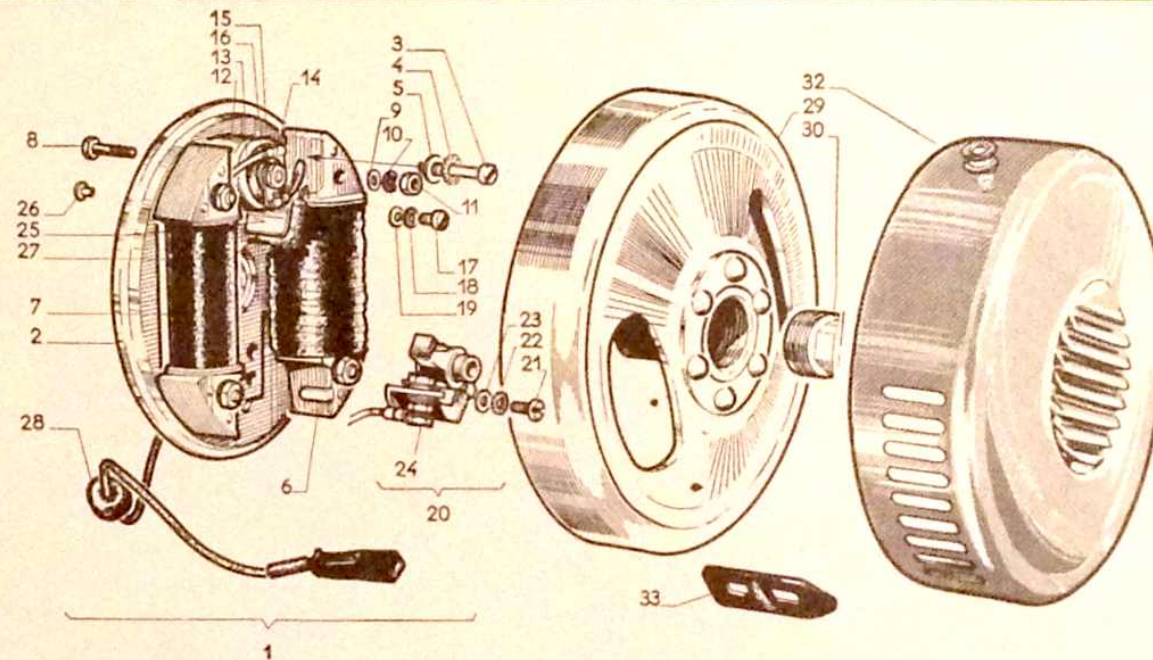


Drawing No	Part No	Nbr of	DESCRIPTION
			CARBURETOR
	41118	1	D 12 D 621 Gurtner adjustment assembly with air cleaner and fuel filter
1	7556	1	Mixing chamber with choke
2	6171	1	Carburetor pinch bolt
3	6108-3	1	Throttle slide
4	6174	1	Throttle guide
5	3712	1	Throttle spring
6	6163	1	Mixing chamber top
7	1510	1	Cable adjuster
8	1511	1	Lock nut
9	8025	1	Choke cable guide
10	V 621	1	Carburetor top screw
11	B 4	1	Spring washer
12	6546 G	1	Throttle stop screw dia. 5 mm
13	5072	1	Stop screw spring
14	5012	1	Jet = 23
15	6437	1	Brass float with needle
16	7052	1	Float chamber cover with stud
17	6585	1	Filter bowl
18	4159	1	Filter
19	6159	1	Float chamber gasket
20	6687	1	Filter bowl gasket
21	6842	1	Mounting bracket
22	6596	1	Screw for mounting bracket
23	B 5	1	Spring washer
24	8023	1	Air filter assembly
25	6221	1	Air filter retaining ring
26	3876 B	1	Paper gasket
27	40495	1	Air intake sleeve
28	40496	1	Clip
29	C 5-12	1	Clip bolt
30	Q 5	1	Nut
31	41511	1	Shield with bracket
			FUEL TAP
33	40403	1	Fuel tap with seal
—	1163	L=225	Fuel line
34	1165 B	1	Cup with seal
35	40403 B	1	Valve button

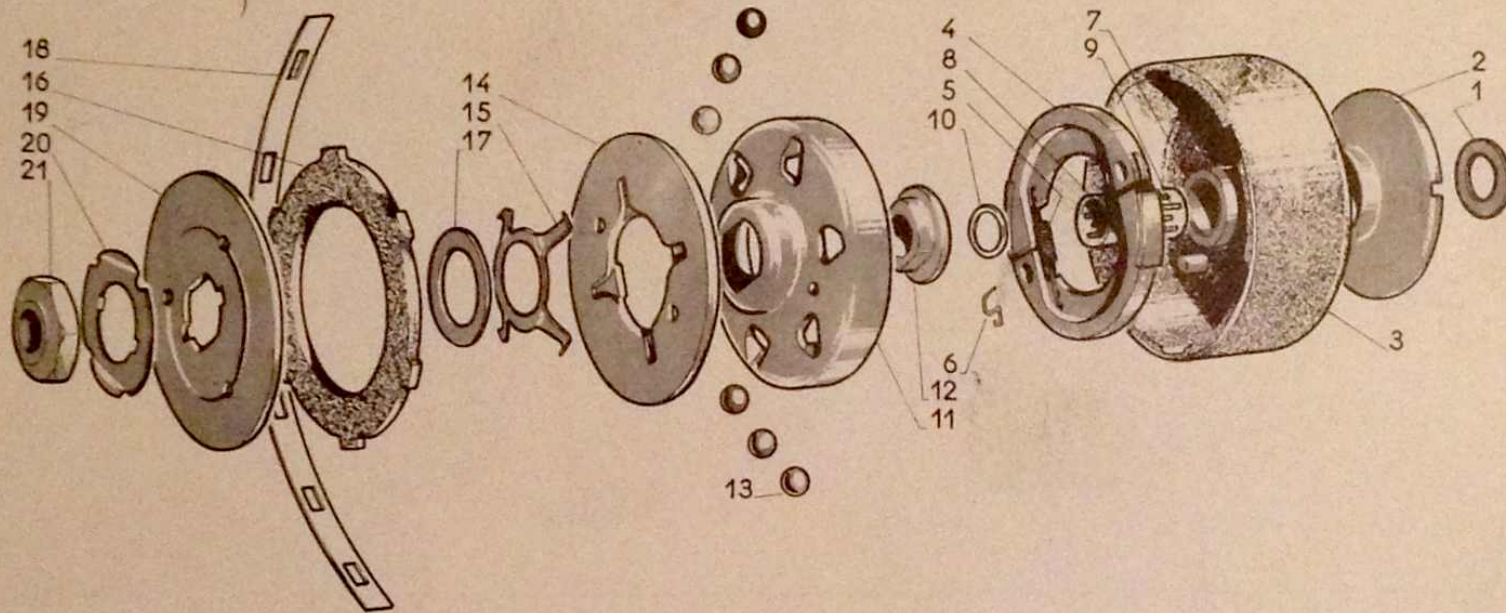


PEUGEOT MOTORBIKE PARTS

MODEL 104M "M"



Drawing No	Part No	Nbr of	DESCRIPTION	Drawing No	Part No	Nbr of	DESCRIPTION
PEUGEOT FLYWHEEL MAGNETO							
1	35490 E 34963 EB	1	Flywheel magneto assembly (stator and rotor)	23	1750	1	Plain washer
2	34963	1	Stator assembly with coils, condenser and contact breaker	24	1744	1	Contact breaker terminal assembly
3	C 5-20	2		25	30917	1	Lubricating felt bracket
4	W 5	2		26	34952	1	Rivet
5	1207	2		27	31567	1	Cam lubricating felt
6	35488 E	1		28	31543	1	Grommet
7	35487 E	1		29	35485 E	1	Rotor (without nut)
8	35491	4		30	30907	1	Rotor locknut
9	1750	4		—	O 45	1	Flywheel extractor
10	B 4	4		32	38596	1	Flywheel cover
11	HU 4	4		33	38485	2	Cover attachment clamp
12	30911	1		SPARK PLUG LEAD			
13	35480 E	1			40435	1	Spark plug lead assembly L = 480 mm with grommet and spark plug protector
14	HU 4	1			35478	1	Rubber grommet
15	B 4	1			40434	1	Spark plug protector
16	1750	1			39836	1	Insulating sleeve
17	C 4-10	1			39360	1	Attachment clamp
18	B 4	1		SPARK PLUG			
19	1750	1			1003 H	1	« MARCHAL » spark plug CR 35 with washer
20	34931 E	1			1010	1	Spark plug washer
21	CL 4-8	1					
22	B 4	1					



Drawing No	Part No	Nbr of	DESCRIPTION	Drawing No	Part No	Nbr of	DESCRIPTION
			AUTOMATIC MULTI-PLATE CLUTCH DRIVING PULLEY 48 mm DIAMETER	11	42011	1	Drum thrust plate
				12	42010	1	Spacer retainer
				13	42020	6	Ball 11.90 mm
				14	42017	1	Clutch flange
				15	42015	1	Spring retainer
				16	42012	1	Clutch disc
				17	42014 A	1	Washer spacer 1.2 mm.
				18	42016	1	Strap. retaining clutch
				19	42018	1	Outer thrust plate
				20	42019	1	Tab washer
				21	42013	1	Nut
1	42001	1	Complete clutch with pulley				
	34556	1	Thrust Washer				
2	40729	1	Outer flange				
3	42002	1	Outer drum with clutch shoes supports				
4	42007	1	Set of shoes assembled with spring				
5	36148	2	Clutch shoe spring				
6	42008	2	Clutch shoe clip				
7	42009	1	Pulley hub				
8	37863	2	Nylon half cage				
9	37964	10	Needle 2 mm dia. x 15.8 bearing				
10	38601	1	Gasket				